

PigCAM[®]4

EV's PigCAM[®]4 is a free-swimming camera system that utilizes EV's advanced Visual Analytics technology to deliver a full 360-degree view of the internal diameter of pipelines in stunning high definition.

EV's PigCAM[®]4 revolutionizes pipeline assessment. Using EV's award-winning camera technology, it provides a full 360-degree view of pipeline internals, offering unmatched insights into pipeline integrity. Equipped with a 4-camera array, PigCAM[®]4 captures high-definition images in both fluid and gas pipelines, providing midstream operators with unprecedented visibility into even the most complex pipeline challenges.

Designed for infinite adaptability, PigCAM[®]4 features a modular design, accommodating different pipeline sizes and integrating seamlessly with other smart pigging technologies, such as caliper, MFL, UT, or EMAT, to create powerful combo tools that add significant value to existing evaluation programs. Built for global deployment, PigCAM[®]4 addresses diverse assessment needs such as corrosion and cleanliness assessment, coating inspection, crack and leak detection, and blockage quantification.

With Visual Analytics capabilities, PigCAM[®]4 provides quantified images and statistical analysis, helping operators make data-driven decisions, efficiently manage asset integrity and optimize or avoid remedial operations.

FEATURES

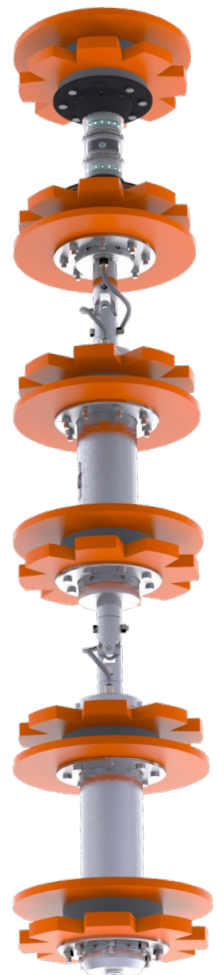
- 24 hours of 25 fps color video
- Four azimuthally aligned cameras providing a 360° high-definition view of the internal diameter of the pipeline
- Recording time can be continuous or split into unlimited intervals with predefined time delays
- Inclinator
- Temperature indicator
- High-side indicator
- Odometer (upon request)
- Speed control (upon request)

BENEFITS

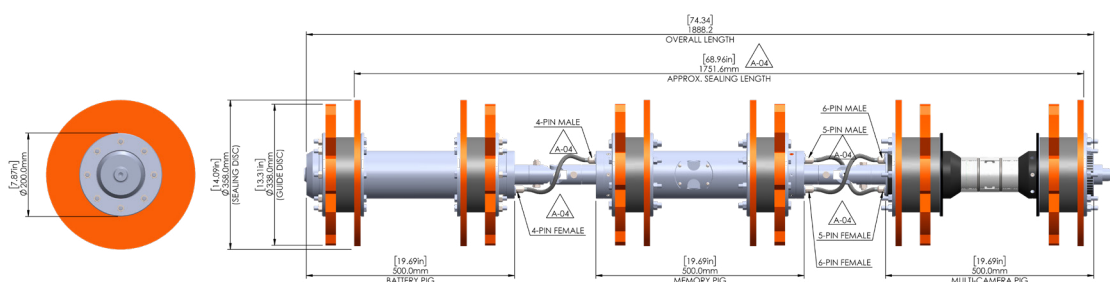
- Eliminates assumptions and provides highly accurate measurements inside the pipeline
- Combines with conventional data sources to enhance answers and optimize or avoid remedial operations.
- PigCAM[®]4's modular design accommodates various pipeline sizes
- Visual Analytics ready to provide rapid data-driven decisions based on precise, quantified images and statistical analysis
- Available on AIVA, EV's cloud-based asset inspection software

APPLICATIONS

- Internal pipeline evaluations, including general condition assessments, identification of coating defects, and corrosion evaluation
- Identification and quantification of leaks and cracks
- Visual assessment of restrictions and deformation
- Assessments for water mains and other utilities
- Detailed survey and assessment prior to pipeline repurposing



Operational Data		
Run Time	> 24 hours	
Pipeline Size	30.5 cm - 40.6 cm	12 in - 16 in
Maximum Operating Speed	0.5 m/s	1.64 ft/s
Continuous Operating Temperature	Up to 60°C	Up to 140°F
Maximum Operating Pressure	100 bar	1450 psi
Minimum Bend Radius	1.5 D	
Power	1x Lithium Battery	
Mechanical Specifications (may vary based on pipeline size)		
Tool Length	1.9 m	
Tool Weight	140 kg	
Sensor Configuration + Specifications		
Camera Type	4 x Sideview	
Frame Rate	25 fps	
Video Resolution	2,880 x Infinity Sideview	
Field of View	> 360° Circumferential Coverage	



NOTE.
1. DISC ARRANGEMENT OF MULTI-CAMERA
PIG SUBJECT TO CHANGE DEPENDENT ON JOB