



THE DOWNHOLE VISUAL
ANALYTICS COMPANY

OPTIS[®] R150

The Optis[®] Real-Time R150 camera system pushes the boundaries of downhole video technology providing vivid, full colour video at up to 25 frames per second for 6 hours at 150° C.

Through the use of high-specification flasks, advanced electronics and state-of-the-art temperature management technology, the Optis[®] R150 system offers a step change over the monochrome, low frame rate, high temperature cameras currently on the market. High resolution, high frame rate video is now possible in well environments of 150 °C for up to 6 hours.

EV's bespoke telemetry system also allows multiple wellbore measurements to be acquired simultaneous to video footage. EV are in a unique position to offer real-time, surface read-out measurements of wellbore pressure, temperature, gamma ray and casing collar locator simultaneously with video, hence providing a robust and complete solution to well diagnosis problems. The Optis[®] R150 can also be deployed on e-coil and e-line tractor operations, providing vision to high risk interventions.

The modular design means that the Optis[®] R150 camera can be run with sideview, downview or both. This capability along with the addition of wellbore measurements put EV's Optis[®] R150 camera at the forefront of downhole video technology.

Features:

- Downview and sideview colour cameras available for full wellbore coverage
- Telemetry tune feature allows the service to be run on a wide variety of cable types and lengths
- Combinable with pressure, temperature, gamma ray and casing collar locator sensors which can be recorded simultaneously with Optis[®] R150 camera or Multi-Finger Caliper data
- Deployable on e-line, e-line tractors or e-coil

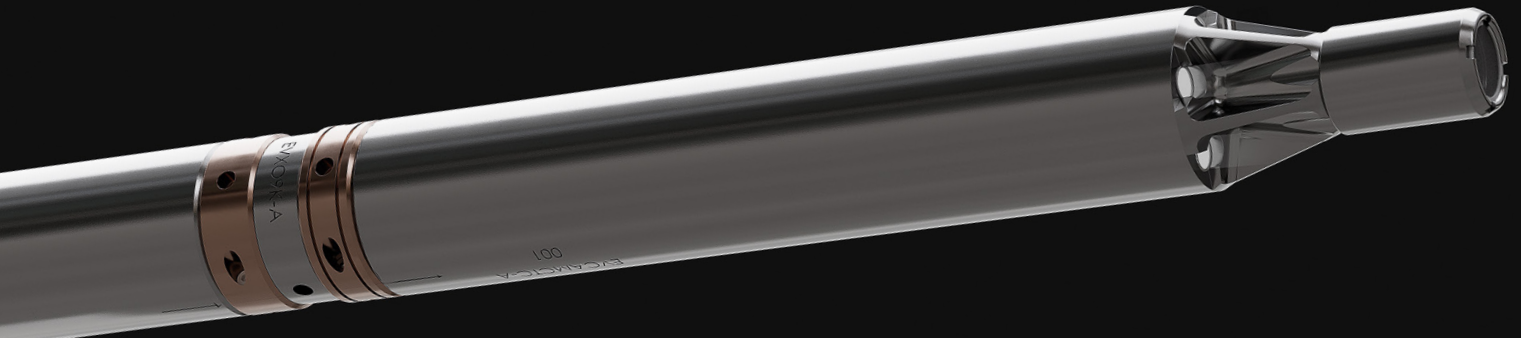
Benefits:

- High resolution, high frame rate, colour video at up to 150 °C
- Increased operational efficiency by combining two or more services in a single run
- High quality images and videos even in marginal fluid conditions

Applications:

- Mechanical inspection of wellbore hardware such as upper and lower completion components
- Imaging of dropped/stuck objects such as wellbore fish
- Inspection and monitoring of corrosion and erosion
- Salt, scale and hydrate identification

OPTIS[®] R150



SPECIFICATIONS

Diameter	1.7 in	43.0 mm
Length*	203.5 in	5167.6 mm
Pressure rating	15,000 psi	1034 bar
Temperature rating	302 °F (up to 6 hours)	150 °C (up to 6 hours)
Camera Type	Downview (Colour) & 360° Motorised Sideview (Colour)	
Video Frame Rate	up to 25 fps	
Orientation Sensor	High-side relative bearing and deviation from vertical	
Field of View	112° (Water) / 135° (Gas)	
Recording Capacity	Continuous real time transmission to surface with any mono-conductor cable	
H2S / CO2	Compatible with corrosion resistant materials throughout	

***Example tool string**

