



THE DOWNHOLE VISUAL
ANALYTICS COMPANY

BASIS™ R200

The Basis™ Real-Time R200 camera delivers high quality monochrome images and wellbore diagnostics at temperatures of up to 200 °C and pressures up to 1034 bar, setting the new standard for high temperature video diagnostics.

Cutting edge lens technology, high-spec flasks, advanced electronics and communications, high intensity LED lighting and state-of-the-art temperature management allow up to 4 hours of continuous operation of the Basis™ R200 camera at a maximum bottom hole temperature of 200 °C (392 °F).

A fully bi-directional transmission system allows EV to control the lighting levels, picture resolution and frame rate from surface to ensure the optimum image is acquired in all conditions. Like all EV surface readout cameras, the Basis™ R200 camera can be run on a wide variety of mono and multi-conductor cables and can be readily integrated into third party deployment and depth systems for improved operational efficiency.

EV's Basis™ R200 camera offers visual wellbore solutions in high temperature environments.

Features:

- Uncompromised, high quality downview monochrome images
- Video available at up to 4 fps
- Real-time surface read-out mode
- Continuous operation at 200 °C (392 °F) for up to 4 hours and up to 6 hours with managed power and temperature operation

Benefits:

- Improved well diagnostic capability in high temperature wells
- Real-time image and data transmission to surface improving operational efficiency and decision making in high temperature environments

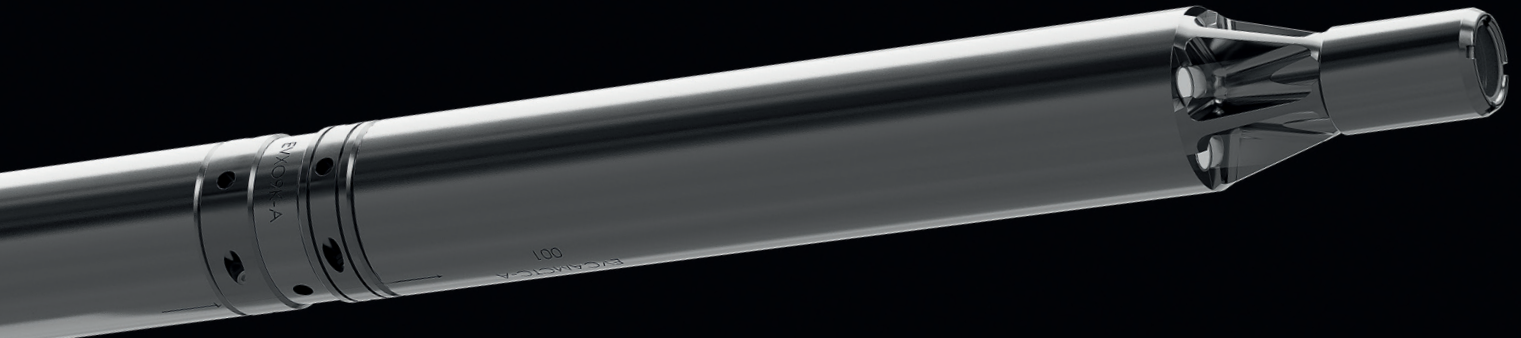
Applications:

- Imaging of dropped/stuck objects such as wellbore fish
- Obstruction identification
- Mechanical inspection of completion components
- Identifying well integrity issues: parted tubing, crushed pipe
- Wellbore clean outs
- Gas storage inspection

BASIS™ R200



THE DOWNHOLE VISUAL
ANALYTICS COMPANY



SPECIFICATIONS

Diameter	2.125 in	54.0 mm
Length*	197.92 in	5027.27 mm
Pressure rating	15,000 psi	1034 bar
Temperature rating	392 °F (4 hours)	200 °C (4 hours)
Camera Type	Downview (Monochrome)	
Video Frame Rate	Up to 4 fps	
Recording Capacity	Continuous real-time transmission to surface	

*Example tool string

