



THE DOWNHOLE VISUAL
ANALYTICS COMPANY

BASIS™ R125

The Basis™ Real-Time camera system provides high quality, monochrome downview and 360° sideview images on any mono or multi-conductor cable.

The Basis™ Real-Time camera system provides reliable, high quality video and images in challenging environments. The bi-directional transmission system provides the user full control of the camera functions, such as lighting levels, image resolution and frame rate, in real-time, optimising image quality in a wide range of operating environments.

The modularity of the system allows sideview and downview cameras to be run in combination or standalone. The sideview camera is fitted with dedicated LED lights and has a wide range of focal lengths to ensure the highest quality images are acquired for in-depth inspection. Rotation of the sideview camera is controlled via a motor providing 360° coverage of the pipe wall. Deviation and high-side indicator measurements are transmitted to surface in real-time, assisting with problem understanding and well diagnosis.

Deployable on electric line or e-coil, the Basis™ Real-Time camera system offers a highly reliable and robust solution to a range of well integrity problems.

Features:

- Downview and 360° motorised sideview cameras available for full wellbore coverage
- Operational on a wide variety of cable types and lengths
- User controlled lighting, image resolution and frame rate from surface
- Deployable on e-line or e-coil

Benefits:

- High quality images and videos even in marginal fluid conditions
- Real-time, surface read-out video and images

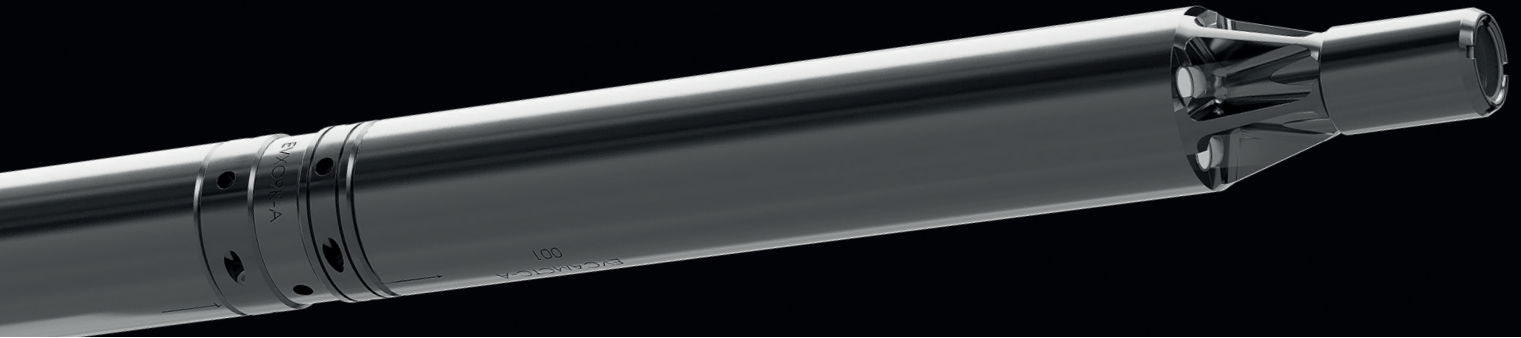
Applications:

- Imaging of dropped/stuck objects such as wellbore fish
- Obstruction identification
- Mechanical inspection of completion components
- Identifying well integrity issues: parted tubing, crushed pipe
- Wellbore clean outs
- Gas storage inspection

BASIS™ R125



THE DOWNHOLE VISUAL
ANALYTICS COMPANY



SPECIFICATIONS

Diameter	1.7 in	43.0 mm
Length*	151.3 in	3842.0 mm
Pressure rating	15,000 psi	1034 bar
Temperature rating	257 °F	125 °C
Camera Type	Downview (Monochrome) & 360° Motorised Sideview (Monochrome)	
Video Frame Rate	Up to 4 fps	
Recording Capacity	Continuous real-time transmission to surface	

***Example tool string**

