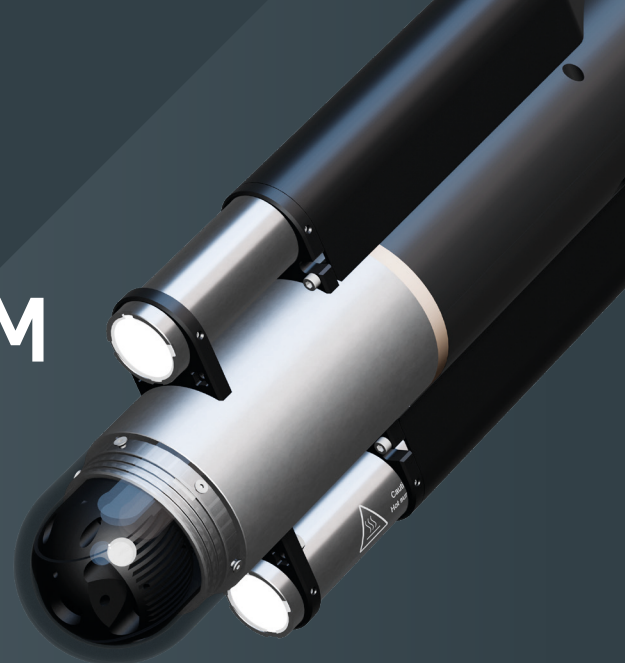


# OPTIS<sup>®</sup> SPUDCAM

## Detachable External Drill Pipe Spud Camera System

*Real-Time Visual Confirmation for Spudding Operations*

Optis<sup>®</sup> SpudCAM is a bespoke, detachable external drillpipe real-time camera system engineered for spudding operations, featuring continuous rotate and tilt functionality to deliver full hemispherical imaging.



### CHALLENGE

During subsea drilling operations, confirming correct drill string alignment and entry into subsea guide structures can be challenging due to limited visibility, environmental conditions and restricted access. Methods such as ROV intervention can increase operational complexity, cost and non-productive time.

### SOLUTION

Developed as a bespoke solution for drill string during drilling operations, the Optis<sup>®</sup> SpudCAM enables operators to visually confirm alignment and entry into subsea guide structures without the need for ROV deployment or other less cost-effective alternatives.

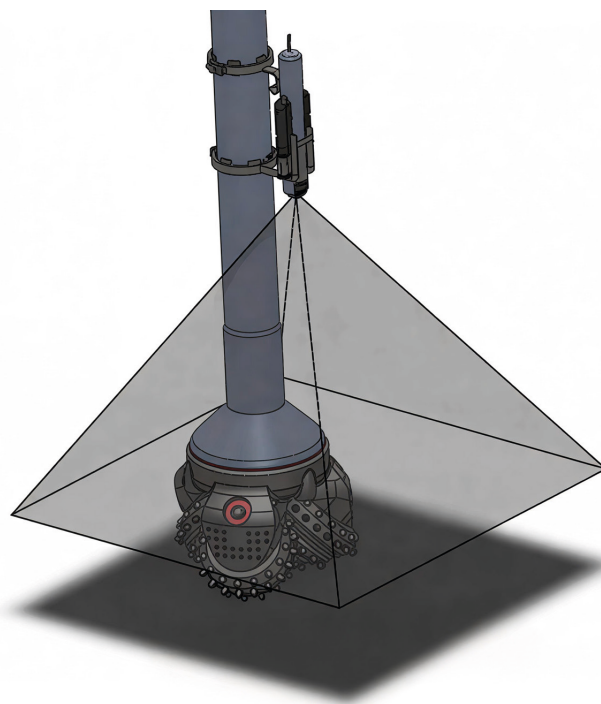
Optis<sup>®</sup> SpudCAM installs a high-resolution underwater camera above the drill bit, mounted externally on the drillpipe. The detachable configuration enables safe deployment, reliable recovery, and continuous 24-hour operational capability, including nighttime deployment and challenging offshore conditions. A Kevlar-reinforced umbilical transmits real-time video of subsea conditions directly to a monitor on the rig floor, enabling immediate visual confirmation during spudding operations.

SpudCAM features continuous rotate and tilt functionality, delivering full hemispherical recording capability. Twin-camera technology provides both low-light monochrome and high frame rate colour imaging, supported by powerful integrated subsea lighting for enhanced visibility in low-clarity fluids.

SpudCAM features a sacrificial bracket system engineered to ensure safe deployment and protect primary drilling equipment. The system is designed for quick rig-up/rig-down and is exclusively available for bit spud operations.

### BENEFITS

- Rapid deployment
- Eliminates the need for ROV and divers
- No interference with drilling equipment
- Deployable in adverse sea states
- Minimizes operational complexity and cost
- 24-hour operation capability (day/night ops)



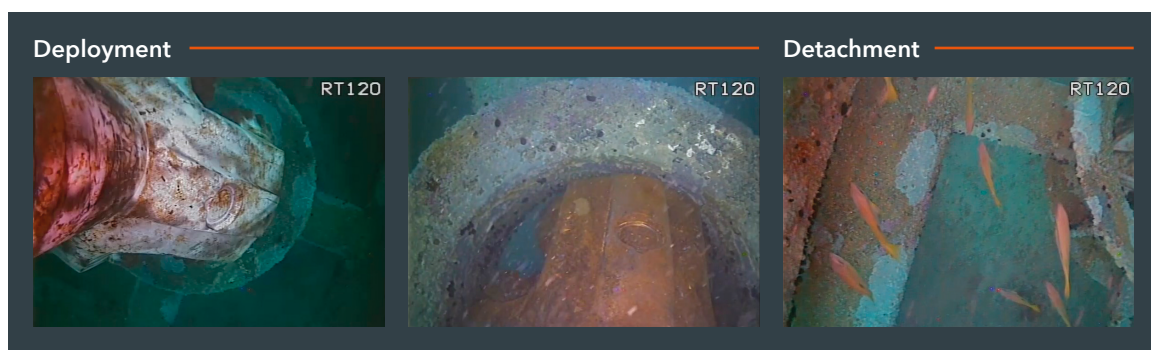
## FEATURES

- High-resolution underwater imaging system
- Continuous rotate and tilt (full hemispherical viewing)
- Communication via umbilical allows real-time images to be transmitted to surface
- Twin camera configuration (low-light monochrome + high frame rate colour)
- Powerful integrated subsea lighting

## SPECIFICATIONS

Typical Maximum Diameter	220mm
Typical Length	772mm
Maximum Depth	1000m
Video Output	Continuous real-time to surface
Camera Type	High-Definition Colour 360° Pan and Tilt

## FOOTAGE



OPTIS® SPUDCAM