

PigCAM®

EV's PigCam® is a non-tethered system utilizing EV's Optis Infinity technology to deliver a full 360-degree view of the internal diameter of pipelines in stunning high definition.

EV's PigCam® revolutionizes pipeline inspection. Using EV's Optis Infinity technology, it provides a full 360-degree view of pipeline interiors, offering unmatched insights into pipeline integrity. Equipped with a multi-camera array, PigCam® captures high-definition images in both fluid and gas pipelines, providing midstream operators with unprecedented visibility into the most complex of pipeline challenges.

Infinitely adaptable, PigCam® features various pig bodies for different pipeline sizes and can integrate with other smart pigging tools like calipers, magnetic flux leakage, or ultrasound tools to add significant value to existing evaluation programs. Designed for global deployment, PigCam® addresses diverse inspection needs such as corrosion assessment, coating inspection, and blockage quantification, offering the detailed data needed for critical decisions.

With Visual Analytics capabilities, PigCam® provides quantified images and statistical analysis on even the most complex pipeline challenges, helping operators make data-driven decisions and efficiently manage assets.

FEATURES

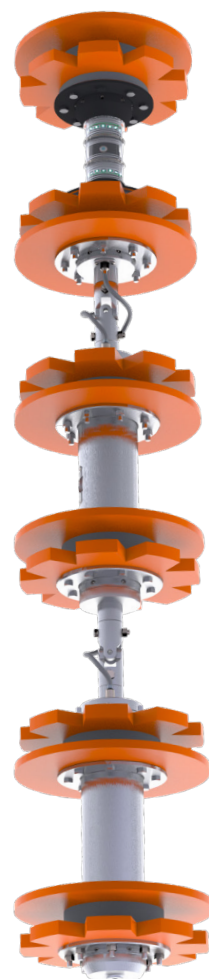
- 24 hours of 25 fps color video
- Four azimuthally aligned cameras providing a 360° high-definition view of the internal diameter of the pipeline
- Recording time can be continuous or split into unlimited intervals with predefined time delays
- Inclinator
- Temperature indicator
- High-side indicator
- Odometer

BENEFITS

- Eliminates assumptions and provides highly accurate measurements inside the pipeline
- Combines with conventional data sources to enhance answers and avoid unnecessary digs
- PigCam®'s modular design accommodates various pipeline sizes
- Visual Analytics ready to provide rapid data-driven decisions based on precise, quantified images and statistical analysis
- Available on AIVA, EV's cloud-based asset inspection software

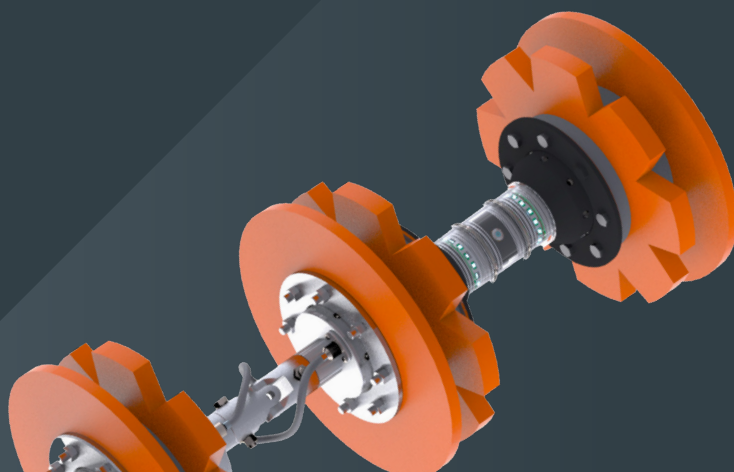
APPLICATIONS

- Internal pipeline inspections, including general condition assessments, identification of coating defects, and corrosion evaluation
- Identification and quantification of leaks and cracks
- Visual assessment of restrictions and deformation
- Inspections for water mains and other utilities
- Detailed survey and assessment prior to pipeline repurposing



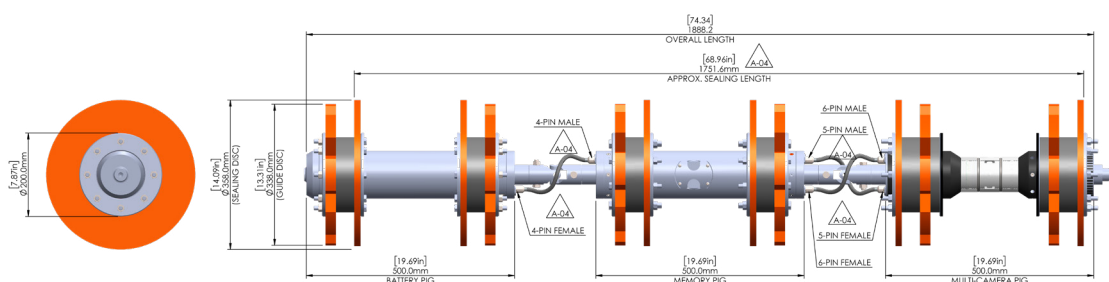


THE DOWNHOLE VISUAL
ANALYTICS COMPANY



SPECIFICATIONS

OPERATIONAL DATA		
Run Time	> 24 hours	
Pipeline Size	35.6 cm - 45.7 cm	14 in - 18 in
Maximum Operating Speed	0.5 m/s	1.64 ft/s
Continuous Operating Temperature	Up to 60°C	Up to 140°F
Maximum Operating Pressure	400 bar	5,800 psi
Minimum Bend Radius	1.5 D	
Power	Lithium Battery	
MECHANICAL SPECIFICATIONS (may vary based on pipeline size)		
Tool Length	1.9 m	
Tool Weight	140 kg	
SENSOR CONFIGURATION + SPECIFICATIONS		
Camera Type	4 x Sideview	
Frame Rate	25 fps	
Video Resolution	2,880 x Infinity Sideview	
Field of View	> 360° Circumferential Coverage	



NOTE:
1. DISC ARRANGEMENT OF MULTI-CAMERA
PIG SUBJECT TO CHANGE DEPENDENT ON JOB

PIGCAM®

MP-00233-A01

evcam.com